

# WHY CIFA



## Truck Pumps **STEELTECH** Series



**WHY CIFA**



# MORE THAN 15.000 TRUCK PUMPS SOLD IN THE WORLD

It was the end of 60's when Cifa produced the first truck pump. Since then, Cifa has been designing, producing and developing the most advanced technology, bringing every year to the market new reliable solutions. Solutions to prove that CIFA truck pumps are better than ever. Always.



READY FOR DELIVERY



MANUFACTURING FACILITIES



LEAN PRODUCTION



**PLACING BOOMS**

Available lengths to reach all distances: from 20 meters to 58 meters.



**STABILIZATIONS**

Different types of stabilization in order to guarantee a safe work in a small area.



**PUMPING UNITS**

Three open loop types and two closed loop types according to the desired way of pumping.



**CONTROL SYSTEMS**

Designed and positioned to make the job easier and to speed up all the operations.



**SAFETY**

Different systems to work and move the boom in all its configurations in total safety.



**FINISHING**

Customized painting available upon customers' request.



**LEASING**



Available in Italy, Russia, China, South Africa, Australia, USA and Germany.

**ITALIAN DESIGN**



Main components of the CIFA truck pumps are Italian or German brand

**MOUNTED ON ALL TRUCK BRANDS**



CIFA truck pumps can be mounted on all truck brands. According to CIFA truck specifications documentation

**TRAINING FOR OPERATORS**





# PLACING BOOM

**STRENGTH AND RELIABILITY:**  
The booms mounted on CIFA truck pumps combine both strength and reliability. Each section of the boom has been designed for maximum structural resistance and fatigue strength. These advanced booms reduce to the minimum the areas subjected to stress intensification when in operation.

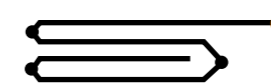


**VERSATILITY AND FLEXIBILITY:**  
Different configurations of the booms on CIFA truck pumps ensure the greatest operative versatility and enable to reach almost any part of the construction yard, even those accessible with the most difficulty. Complete working flexibility together with great working speed, allows the complete extension of the boom and its perfect positioning in few minutes.

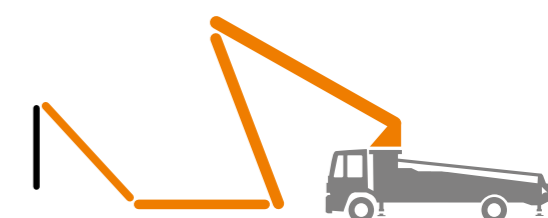


## ZR Type

Suitable for the boom opening inside the buildings and for concrete pouring near the truck pump.

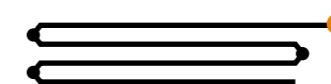


Available for:  
**K20L - K24L**



## Z Type

Quick opening operations for concrete pouring near and far from the truck pump.



Available for:  
**K31L - K36L-5 - K36L - K38L**



## RZ Type

Ideal for 5 and 6 sections boom. It provides maximum flexibility by combining R+Z solutions.



Available for:  
**K42L - K50L - K52L - K55L - K56L - K61L - K63L**



The structural strength and stiffness of the sections ensure limited oscillations even on longer booms.

The working speed, guarantees the complete extension of the boom and a quick and perfect positioning.

# FOLDING SYSTEMS



# STABILIZATION

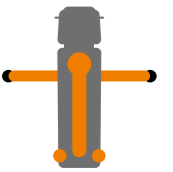


The front stabilization is available in four design concepts: single horizontal, single, double and triple telescopic-X-style outriggers. The rear stabilization is available in three design concepts: fixed, single extension and swing-out. Each machine has its stabilization system according to the size of the boom.



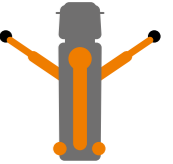
Front: **Single telescopic horizontal**  
Rear: **Fixed**

Available for:  
**K20L**



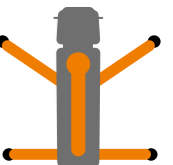
Front: **Double telescopic X style**  
Rear: **Fixed**

Available for:  
**K24L**



Front: **Single telescopic X style**  
Rear: **Single horizontal**

Available for:  
**K31L - K36L-5**



Front: **Single telescopic X style**  
Rear: **Swing-out**

Available for:  
**K38L - K36L**



Front: **Double telescopic X style**  
Rear: **Swing-out**

Available for:  
**K42L - K50L - K56L**



Front: **Triple telescopic X style**  
Rear: **Swing-out**

Available for:  
**K61L - K63L**



All outriggers are designed to stabilize the machine in the right way in extraordinary tight spaces.

The sequences of the extension phase are quick in order to accelerate the stabilization.

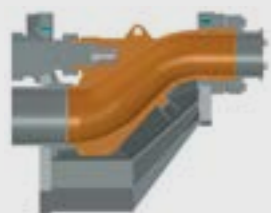
Each outrigger can be used as a tank with a capacity ranging from 400 to 700 liters.





# PUMPING UNIT

Completely removable, the pumping unit ensures gentle, continuous and regular flow. This technology guarantees an extremely efficient system for pumping different types of concrete, with aggregates of all sizes, reducing the number of cycles per minute while maintaining the same flow rate, thus ensuring less wear and longer life.



**"S" VALVE:**  
The structure is made with varying thickness to achieve maximum resistance to wear even when using difficult types of concrete.



**WEAR RING AND WEAR PLATE:**  
The ring and the plate are made of special anti wear material against abrasion and stress due to the concrete flow.



**CIFA LONG LIFE PIPES MADE BY CIFA**  
CIFA truck pumps have long life pipes as standard equipment.



CIFA truck pumps have the first bend outside the pumping unit in long life pipes as standard equipment.

## Open Loop: Hydraulic management

### 709

Available for:  
K20L



### HP907H

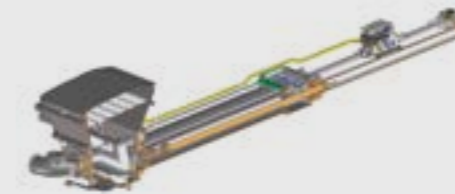
Available for:  
K24L



### HP1606H

Available for:

K31L - K36L-5 - K36L - K38L  
K42L - K50L - K56L - K61L



## Closed Loop: Electronic or hydraulic management



### HP1608EC

Available for:

K24L - K31L - K36L-5 - K36L - K38L  
K42L - K50L - K56L



### HP1808ECX

Available for:

K42L - K50L - K56L - K61L - K63L

## The quiet pumping system

A revolutionary system to drastically reduce vibrations, wear and noise. The "core" of the vibration is caused by the pumping unit movement therefore the system is placed in the 3 main fixing points and, thanks to the rubber absorbers, it reduces the vibrations transferred to the frame keeping the boom still while pumping.

- Low vibration
- Low noise
- Higher comfort of use
- Improved balancing while working
- Less wearing of key components



Rear Damping System



Front Damping System

PUMPING UNITS		709	HP907H	HP1606H	HP1608EC	HP1808ECX
MAX. THEORETICAL OUTPUT	m <sup>3</sup> /h	70	90	160	160	180
MAX. PRESSURE ON CONCRETE	bar	85	70	53	80	83
MAX. NUMBERS OF CYCLES PER MIN.	n	25	28	30	31	27
CONCRETE CYLINDERS (DIAM. X STROKE)	mm	200x1500	200x1650	230x2100	230x2100	260x2100
CONCRETE HOPPER CAPACITY	l	500	550	550	550	600
HYDRAULIC CIRCUIT	type	open	open	open	closed	closed



# CONTROL SYSTEMS



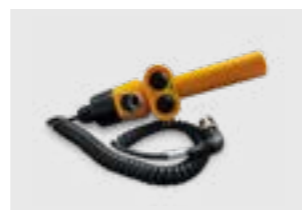
### DETACHABLE ELECTRICAL SYSTEM

The electrical system can be detached for easy maintenance.



### HYDRAULIC OUTRIGGERS CONTROL

Hydraulic controls on both sides of truck pump. The machine emergency stop is also positioned nearby.



### WIRED VIBRATOR AND HORN REMOTE

Convenient cable control dedicated to the mixer driver. It can be used from both sides of the hopper.



### BOOM PROPORTIONAL DISTRIBUTOR

Ergonomic hydraulic controls for boom.



### REMOTE CONTROL

Comfortable and lightweight for boom control and the management of the main machine functions. Different models and brands available.



### REAR CONTROL PANEL

Control panel positioned on the rear side.

## Easytronic

Machine management system for Steeltech series pumps with open loop pumping units

### SILVER (Standard)



#### DISPLAY LCD 5"

The standard version includes:

- Pumping unit management
- Diagnostics
- Counters
- Auto vibration

### GOLD (Option)

## Easytronic Silver

+

## LSC - Light Stability Control



Limits the boom slewing angle when any outrigger cannot be fully opened. Includes: Autormp

## Smartronic®

Machine management system for Steeltech series pumps with closed loop pumping units

### SILVER (Standard)



#### DISPLAY LCD 7"



#### PUMPING UNIT MANAGEMENT

Automatic hopper-grid vibration



#### DIAGNOSTICS

In case of fault, the operator is guided to understand what's the subpart involved and graphically guided to understand the issue



#### COUNTERS

### GOLD (Option)

Standard for Carbotech series (excl. K40H)  
Includes SILVER functions plus:



#### AUTO RPM

Fully adjustable automatic truck RPM management



#### RAMP MANAGEMENT

Fully adjustable pumping ramps management



#### MBE

Max Boom Extension



#### ASC

Advanced Stability Control

## Smartronic Advanced

(Add-on Option for Smartronic GOLD)



### Automatic Boom Folding and Unfolding

The function allows to open and close the boom automatically using a dedicated command on the radio remote.



### ASC 2.0

Gives the possibility to move some boom sections even when the limit of the safety coefficient is reached.



### Boom Antibouncing System

The Anti-Bouncing function strongly reduces boom oscillations (up to -25%).



### Radio remote control with display

# OPTIONS

## LIGHTS HOLDER UNDER THE HOPPER



CIFA VISTA: Remote machine monitoring



Pumping unit dampening

## TWO DIFFERENT TYPES OF SHUT OFF VALVE AS OPTION

The shut-off valve stops immediately the flow of the concrete.



Shut Off valve on endhose



Shut Off valve in pipeline



Activation by remote control



High pressure water pump



Air compressor for pipeline cleaning



Hopper cover



Rear camera

List of other components available on demand



Wood stocks holders



Ladder to fuel tank access



Light on boom



K56L - POLAND



K36L - TURKEY



K20L - ENGLAND



K42L - U.S.A.



K50L - ITALY



K36L-5 - UK



K38L - U.S.A.

# JOB SITES

# DATA SHEET

## STEELTECH

Find more info on truck configuration at [www.cifa.com](http://www.cifa.com)



### K20L

PLACING BOOM	4ZR 20/16
PUMPING UNIT	70 m³/h 85 bar
DRIVEN BY	PTO OR GEAR BOX
CHASSIS	2 AXLES



### K24L

PLACING BOOM	4RZ 24/20
PUMPING UNIT	90 m³/h 85 bar
	160 m³/h 80 bar
DRIVEN BY	PTO OR GEAR BOX
CHASSIS	2 - 3 AXLES



### K31L

PLACING BOOM	5Z 31/27
PUMPING UNIT	160 m³/h 53 bar
	160 m³/h 80 bar
DRIVEN BY	PTO OR GEAR BOX
CHASSIS	3 - 4 AXLES



### K42L

PLACING BOOM	5RZ 42/38
PUMPING UNIT	160 m³/h 53 bar
	160 m³/h 80 bar
	180 m³/h 83 bar
DRIVEN BY	PTO OR GEAR BOX
CHASSIS	4 AXLES



### K50L

PLACING BOOM	5RZ 50/44
PUMPING UNIT	180 m³/h 83 bar
	160 m³/h 80 bar
	160 m³/h 53 bar
DRIVEN BY	PTO OR GEAR BOX
CHASSIS	4 AXLES



### K56L

PLACING BOOM	5RZ 56/51
PUMPING UNIT	160 m³/h 53 bar
	160 m³/h 80 bar
	180 m³/h 80 bar
DRIVEN BY	PTO OR GEAR BOX
CHASSIS	4 (EXTRA CE) - 5 (CE)



### K36L-5

PLACING BOOM	5Z 36/31
PUMPING UNIT	160 m³/h 53 bar
	160 m³/h 80 bar
DRIVEN BY	PTO OR GEAR BOX
CHASSIS	3 - 4 AXLES



### K36L

PLACING BOOM	4Z 36/32
PUMPING UNIT	160 m³/h 53 bar
	160 m³/h 80 bar
DRIVEN BY	PTO OR GEAR BOX
CHASSIS	3 - 4 AXLES



### K38L

PLACING BOOM	4Z 38/34
PUMPING UNIT	160 m³/h 53 bar
	160 m³/h 80 bar
DRIVEN BY	PTO OR GEAR BOX
CHASSIS	3 - 4 AXLES



### K61L

PLACING BOOM	5RZ 61/56
PUMPING UNIT	160 m³/h 53 bar
	180 m³/h 80 bar
DRIVEN BY	PTO OR GEAR BOX
CHASSIS	5 AXLES



### K63L

PLACING BOOM	6RZ 63/58
PUMPING UNIT	180 m³/h 80 bar
DRIVEN BY	PTO OR GEAR BOX
CHASSIS	6 AXLES





**Distributor**



**CIFA S.p.A.**

Via Stati Uniti d'America, 26  
20030 Senago (Milano) - Italy

tel. +39.02.990131

fax. +39.02.9981157

**sales@cifa.com**

**www.cifa.com**

