



TURBOSOL[®]

PUMPING TECHNOLOGY FOR THE CONCRETE INDUSTRY

TURBOSOL
over 60 years
of experience
and reliability

TB 30

S-VALVE PUMP



TB 30: cutting edge technology, new compact design for best performance in the toughest jobsites.

www.turbosol.com

TB 30

TECHNICAL DATA

Liquid cooled diesel engine	Yanmar - 4TNV88C-DY12D - 4 cylinder - 35,5 kW - 48,3 HP (EU Stage V) Yanmar - 4TNV88 - 4 cylinder - 36,4 kW - 49,5 HP (Stage III A)
Electric motor (upon request)	30 kW – 400 V 50 Hz
Infinitely adjustable output*	from 4 to 30 m ³ /h
Max. aggregate size	35 mm
Max. working pressure	80 bar
Pumping cylinders	Ø 200 mm stroke of 570 mm
Max. strokes	28/min
Drive cylinder diameter	100/56 mm
Delivery manifold	Ø 150 mm
Hopper capacity	300 l
Delivery distance*	200 m
Delivery height*	100 m
Filling height	135 cm
Chassis	Manual draw-bar - fixed axle and pneumatic wheels On-road towing - with brakes and suspension approved for road use
Size (L x W x H)	330 x 175 x 165 cm / 455 x 185 x 190 cm #1
Weight (draw-bar)	2.250 kg
Weight (on road towing set-up)	2.500 kg

* The data indicated are theoretical and depend on the quality and consistency of the materials to be used, wear and tear of the pump and the diameter of the hoses. The performance in distance and height cannot be reached simultaneously. #1 With on road towing set up (T)

Characteristics

TB 30 is the new stationary concrete pump with S-valve and variable output designed for concrete and for shotcrete works.

State of the art hydraulic system, solid structure, brand new components set-up, reliable controls ensure high level performance with all sort of concrete and low operating costs.

Applications

- Pumping up to 35 mm of concrete
- Grouts
- Self-levelling floor screeds
- Land reinforcement
- Micro-piles, pressurized injection of mortars and slurries
- Compaction grouting
- Shotcrete works

Technical comfort

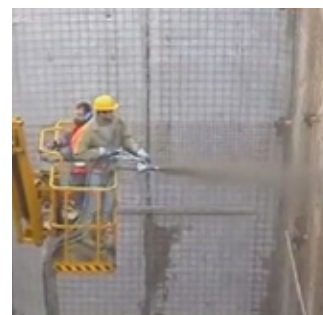
- The practical doors on the canopy and the new construction concept make maintenance and control operations quick and easy.
- Tubular chassis including water, oil and diesel tanks.
- Central single lifting eye.
- Discharge door hydraulically operated for fast cleaning operations.
- Components generously dimensioned.
- Fully hydraulic controls.
- New internal setup concept.
- Compact design.
- New hopper-valve-agitator design ideal even for harsh concrete.

Scope of delivery

- 4 cylinder water cooled diesel engine
- Hopper assembly with S-valve and agitator
- Concrete grill with vibrator
- Centralized lubrication system
- Outlet collector Ø 150 mm with Victaulic couplings
- Hydraulic discharge door
- 2 manual front stabilizers
- Safety horn
- Hydraulic circuit with optimized exchange sequence
- Electromechanical control board
- Bosch Rexroth variable displacement pump
- Lifting eye
- Steel bend at 90° Ø 150 and reduction cone from Ø 150 to Ø 125
- 30 m cable remote control
- Water pump 40 l/m - 20 bar
- Towbar
- 2 washing sponges
- Manual grease pump
- Accessory box

Optionals

- Elastic axle for road towing with brakes and towlights (version T)
- 3-function radio remote control
- Shotcrete guns
- Various dimensions hoses Ø 125, Ø 100, Ø 75, Ø 65, Ø 50 and related accessories
- Hydraulically controlled air compressor, twin-cylinder, capacity 800 l/min
- Admixture dosing pump screw type
- Turbodiesel Perkins engine - 404D22T - 4 cylinder - 45 kW - 60 HP (III A)



PUMPING TECHNOLOGY FOR THE CONCRETE INDUSTRY

TURBOSOL PRODUZIONE S.r.l.

Via Alessandro Volta, 1 - 31030 Pero di Breda di Piave (Treviso) - Italia

Tel. +39 0422 90251 - Fax +39 0422 904408 - E-mail: info@turbosol.it - www.turbosol.com

Standard equipment and optionals could vary due to specific market and legal requirements. The data in this brochure are purely indicative. Turbosol Produzione S.r.l. could make alterations to the models described in this brochure at any time for technical and commercial reasons.

